



DMT GmbH & Co. KG
Messstelle nach BImSchG & Fachstelle für
Erschütterungsmessungen

Am Technologiepark 1
45307 Essen, Deutschland

Supplementary Report
Sensor tests: Conformity with
DIN 45669 requirements on amplitude
response for
Omnidots B.V.

Sitz der Gesellschaft
DMT GmbH & Co. KG
Am Technologiepark 1
45307 Essen, Deutschland

Amtsgericht Essen HRA 9091
Vorsitzender des Aufsichtsrates:
Jürgen Himmelsbach

Tel +49 201 172-01
Fax +49 201 172-1462

info@dm-group.com
www.dmt-group.com

TÜV NORD GROUP

Geschäftsführung:
DMT Verwaltungsgesellschaft mbH, Essen
Amtsgericht Essen HRB 20420

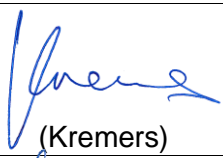
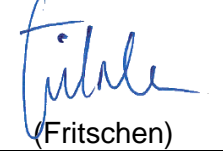
Vertreten durch die Geschäftsführer:
Prof. Dr. Eiko Räkens (Vorsitzender)
Ulrich Pröpper



DIN EN ISO
9001
zertifiziert

DIN EN ISO
14001
zertifiziert

Earth. Insight. Values.

Job number	EG-IG_17_1171			
Report number	1/2017			
Date of report	12.02.2018			
Number of pages	5			
Task definition	Sensor tests: Conformity with DIN 45669 requirements on amplitude response			
Contracting authority	Omnidots B.V.			
Head of expert body	Dr. R. Fritschen			
Author	Dr. Simon Kremers	 (Kremers)		
2nd Author	Dr. Ralf Fritschen	 (Fritschen)		
Other Authors	Tobias Neuffer			
Measurement period	14.11.2017			
Measurement staff	Siegfried Konopka, Christian Runte			
Filename	1171_Report_supplementary_Rev1.pdf			
Revision overview	Version	Date	Replaces document	Description
	1.0	30.01.2018		Original version
	2.0	12.02.2018	Original Version	First Revision

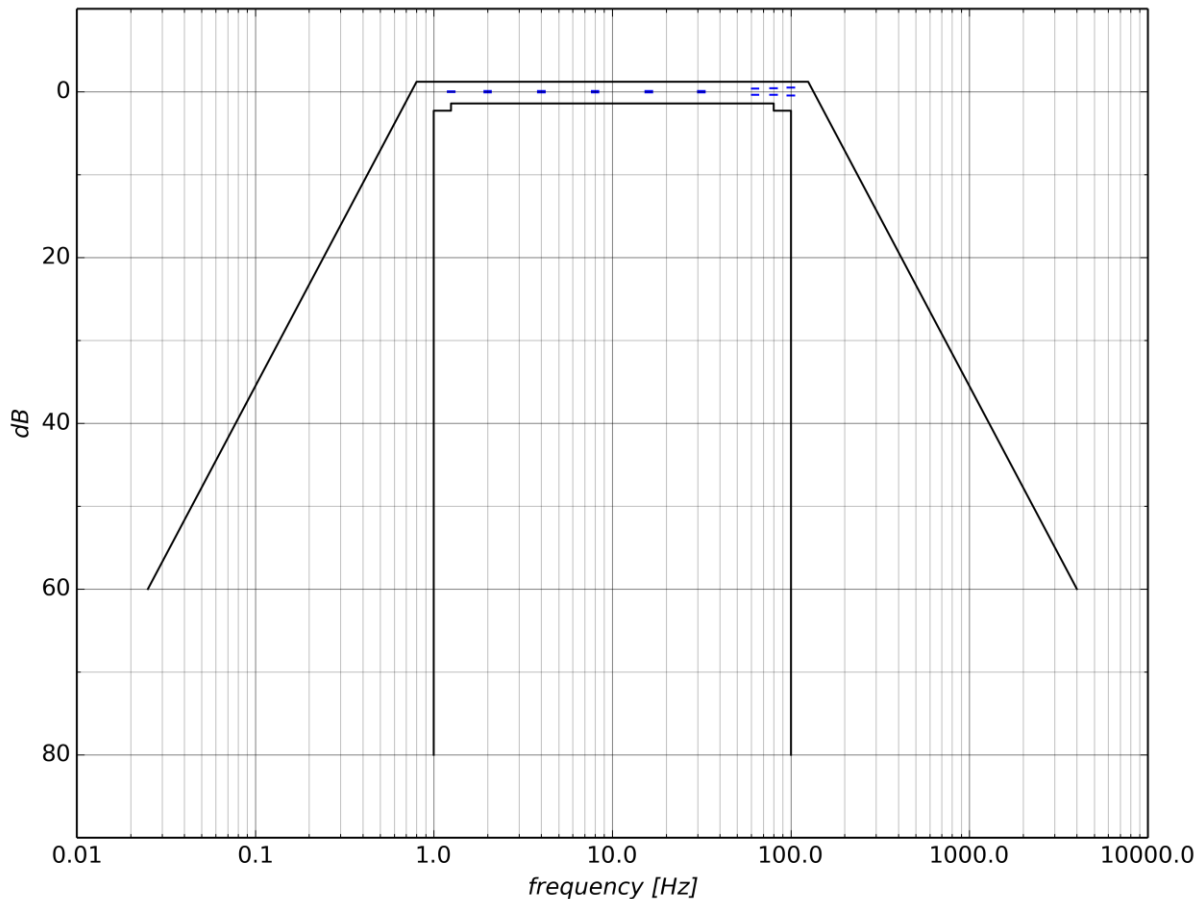


Figure 1: Run 01, relative amplitudes (3σ) in dB of the recordings on the horizontal component at discrete frequencies compared to Dutch SBR standard requirements.

Table 1: Run 01, generated frequencies and amplitudes at the horizontal component compared to the measured frequencies and amplitudes with the required defined by the Dutch SBR standard. The gray shaded columns show 3σ of the all measured amplitudes.

f (target)	f (actual)	A (target)	3σ (\pm) of A (actual)	dB (error -)	dB (\pm)	dB (error +)
1,25	1,25	10	0,071	1,4	0,062	-1,2
2	2	10	0,078	1,4	0,067	-1,2
4	4	10	0,093	1,4	0,080	-1,2
8	8	10	0,077	1,4	0,067	-1,2
16	16	10	0,086	1,4	0,074	-1,2
31,5	31,5	10	0,093	1,4	0,081	-1,2
63	62,99	2	0,085	1,4	0,363	-1,2
80	79,99	2	0,093	2,3	0,394	-1,2
100	100,01	2	0,112	2,3	0,472	-1,2
125	125,01	2	-	-	-	-1,2

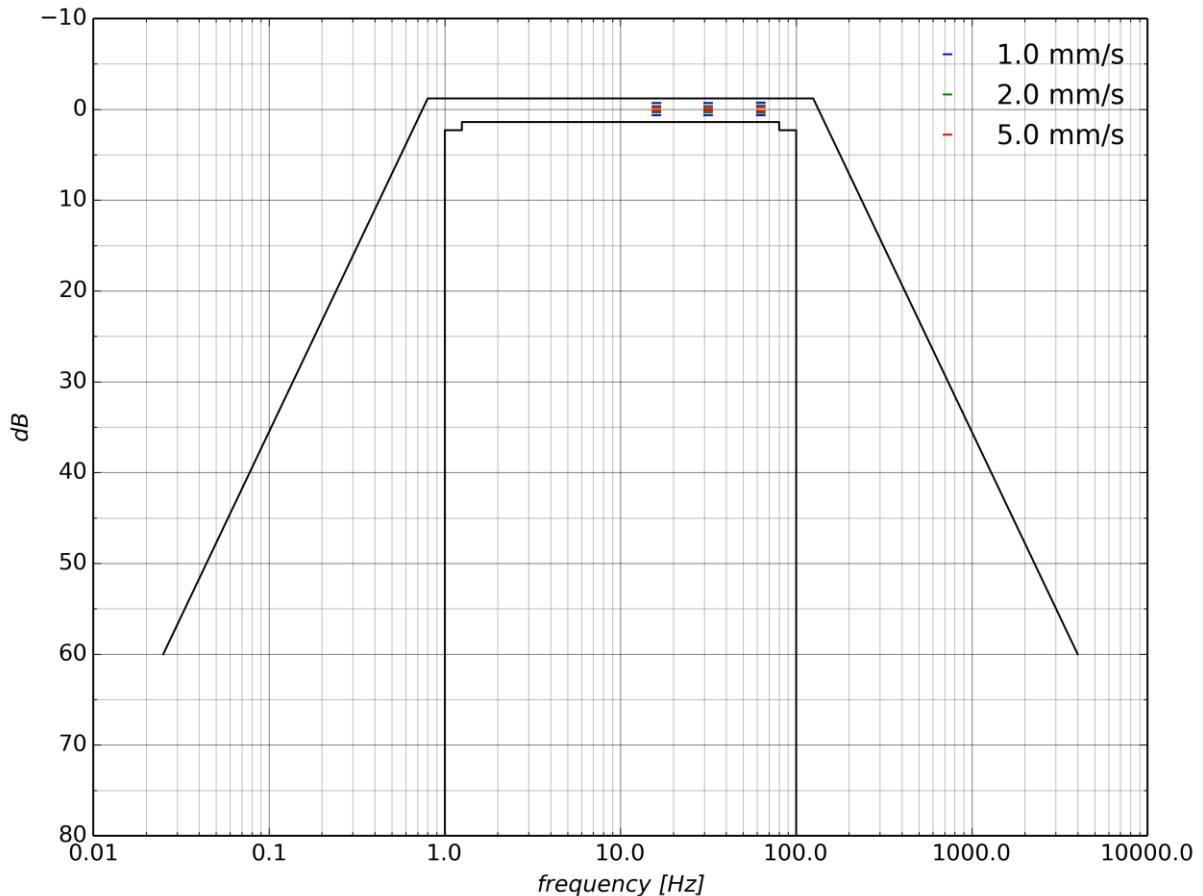


Figure 2: Run 02, relative amplitudes (3σ) in dB of the recordings on the horizontal component at discrete frequencies and amplitudes compared to Dutch SBR standard requirements.

Table 2: Run 02, generated frequencies and amplitudes at the horizontal component compared to the measured frequencies and amplitudes with the required defined by the Dutch SBR standard. The gray shaded columns show 3σ of the all measured amplitudes.

f (target)	A (target)	$3\sigma (\pm)$ of A (actual)	dB (error -)	dB (\pm)	dB (error +)
16	1	0,077	1,4	0,644	-1,2
16	2	0,084	1,4	0,358	-1,2
16	5	0,089	1,4	0,154	-1,2
31,5	1	0,078	1,4	0,649	-1,2
31,5	2	0,081	1,4	0,344	-1,2
31,5	5	0,083	1,4	0,143	-1,2
63	1	0,080	1,4	0,667	-1,2
63	2	0,094	1,4	0,400	-1,2
63	5	0,122	1,4	0,209	-1,2

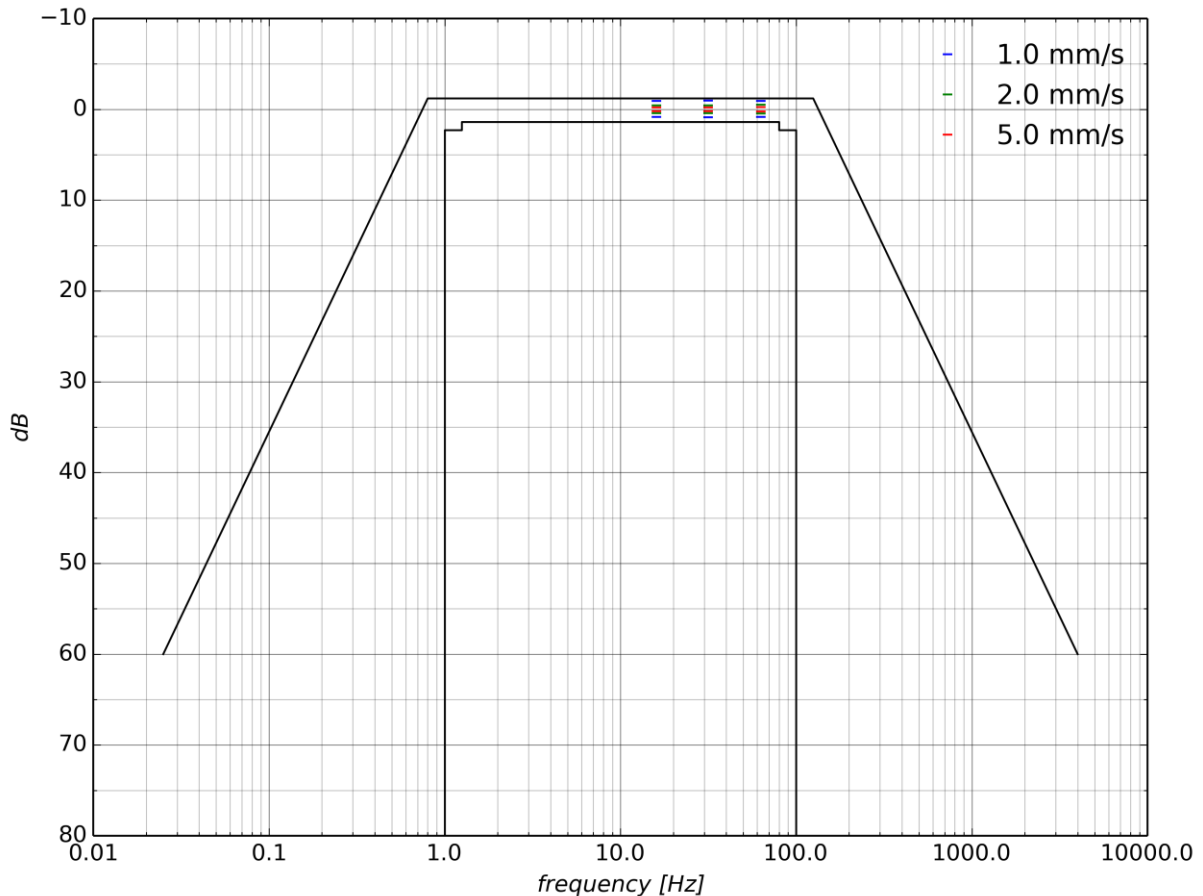


Figure 3: Run 03, relative amplitudes (3σ) in dB of the recordings on the vertical component at discrete frequencies and amplitudes compared to Dutch SBR standard requirements.

Table 3: Run 03, generated frequencies and amplitudes at the vertical component compared to the measured frequencies and amplitudes with the required defined by the Dutch SBR standard. The gray shaded columns show 3σ of the all measured amplitudes.

f (target)	A (target)	$3\sigma (\pm)$ of A (actual)	dB (error -)	dB (\pm)	dB (error +)
16	1	0,099	1,4	0,821	-1,2
16	2	0,098	1,4	0,413	-1,2
16	5	0,116	1,4	0,199	-1,2
31,5	1	0,104	1,4	0,862	-1,2
31,5	2	0,100	1,4	0,425	-1,2
31,5	5	0,113	1,4	0,195	-1,2
63	1	0,099	1,4	0,821	-1,2
63	2	0,112	1,4	0,475	-1,2
63	5	0,143	1,4	0,244	-1,2